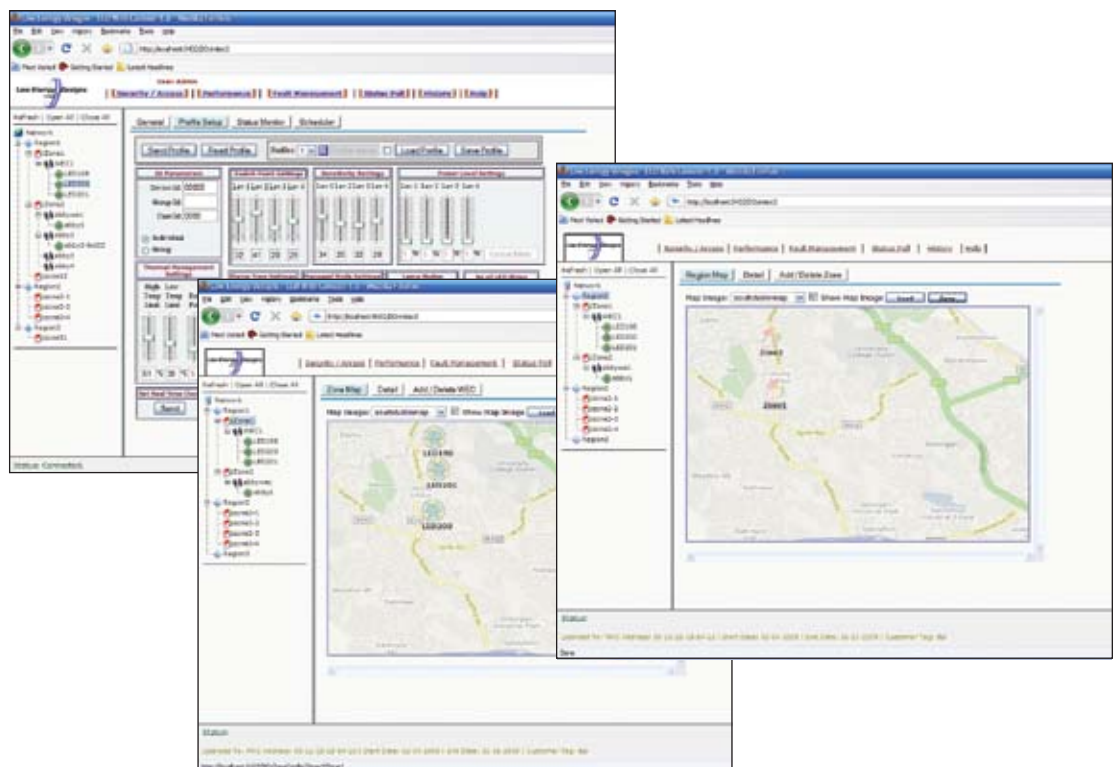


Intelligent Lighting Management System (ILMS)

Engineering/Serviceing and Management

Low Energy Designs offer an Engineering Software and control solution and Network Management System Software package to meet the customer's requirements. The software is license protected for each customer to have full protection for their installed lighting system. Offering a cost effective system, whether for street/area lighting management or for building or commercial premises power management.



The **ILMS (Intelligent Lighting Management System)** comprises of two system elements, the Engineering Software and the Network Management System (NMS).

The Engineering Software can be installed on a small laptop or Mobile 6 Windows PDA to enable a remote or local remote connection. This gives an on-site engineer full control and programming ability to change or enhance settings of the lights or to improve performance or customise each of the luminaires.

The Network Management System (NMS) enables the end customer to build a complete lighting system network of luminaires or other such remote devices. It provides the operator with reports on performance, power usage, faults, security/access over a given period for a luminaries history, all at the click of a mouse!!

This information can be used for improving or maximising savings by dimming or switching lights on/off as well as providing direct information to engineers for specific luminaire maintenance.

Other features provide road temperature alarms, vehicle counting reporting, crash barrier monitoring along with customised external alarms if required.

Functionality, Monitoring and Control Features

- Run in Manual or Automatic mode.
- Ability to set automatic self light levelling system (the light either increases or decreases brightness automatically – fully programmable).
- Ability to set PiR movement light activation or a combination of both.
- Monitor and record LED Tj junction temperature and set upper and lower Tj junction temperature range.
- Ability to set a range of light schedules facilitating various power-saving modes.
Dim switch on/off anytime 24/7 365 days per year.
- Monitor and set luminaire alarms and ancillary functions (e.g. alarm if PIR/Movement sensor activated).
- Ability to monitor and set power-output control, ramping power timer, real time clock, lamp total burn time and system diagnostics.
- Set or program Personal Area Network codes or device/group ID's for setup of network.
- Set any output colour on RGB LED board.
- Set real time clock.
- Set PIR on/off levels and duration.
- Filters for performance for individual devices, group or total network of system.
- Password control and access privileges management.
- Geographical mapping onto system to have a direct representation of area (region map).
- Deployment by Lat & Long or GPS reading.
- Single device, group or whole network creation.
- Area/zones creation for more control (granularity).
- Settable Alarm limit thresholds.
- Monitoring and setting fault management thresholds and viewing fault history by individual, group or zone.
- Monitoring power performance and setting filters.
- Ability to output analytical reports/graphs on all elements.

Please contact us for further information or to discuss your specific requirements