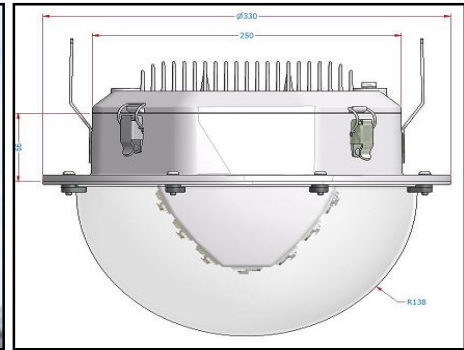


SunFIRE 5/7 & SBPRO



INTELLIGENT ENERGY SAVING SOLUTIONS WITH THE SunFIRE 5/7. The SunFIRE LED light is capable of providing over 80% cost savings compared with traditional lighting solutions.



FEATURES:



◆ Photovoltaic PV Sensor

Automatically adjusts the LED light output in response to ambient light levels. LED power output to ambient light level matrix is fully programmable.

◆ Automatic LED Temperature Control

Will automatically reduce if the LED PN junction exceeds the set operating temperature (ensures maximum lamp life).

◆ PIR Movement Sensors

Used to trigger a single light or a group of lights in common or multiple areas. Ideal for storage facilities.

Wirelessly no need for cabling between lights.

◆ Lighting Schedules

A range of 32 schedules can be programmed facilitating various power saving modes. Schedule 24/7 on/off dimming etc.

◆ Radio Control

Full wireless remote control of all parameters is possible from a control PC via a radio interface. No need for cables or access equipment. No cost for data.

◆ Advanced Control

Includes fault reporting, 1-100% dimming from any output power, timer and system diagnostics, alarms, history, ramping power from 0 seconds—2 hours, admin, etc.

◆ Colour Rendering

Our standard package has $Ra \geq 75$.

◆ Settings

All settings are programmable allowing for 100% light customisation.

◆ Rotation LED Module & variable optics

Various optics can be applied and used to maximise the light output, allowing the light to be aimed where needed potentially allowing for the light to be dimmed further to save power.

BRACKETS: Choose from our following brackets:



Type 4 Bracket

Vertical pole mount up to 76mm



Type 6 Bracket-Vertical

76mm mount

Type 8 Bracket- Horizontal

62mm mount



Type 15 Bracket

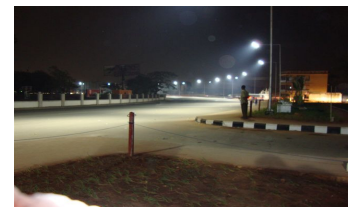
Mounting Ears Hanging

APPLICATIONS:-

Street

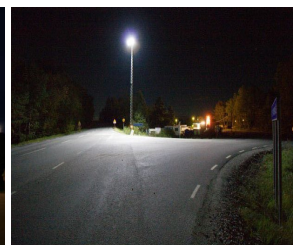
Pathway

Car Parks



Before 750w HPS

After 150w LED



SunFIRE 5/7 & SBPRO

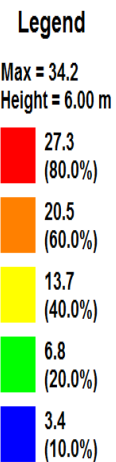
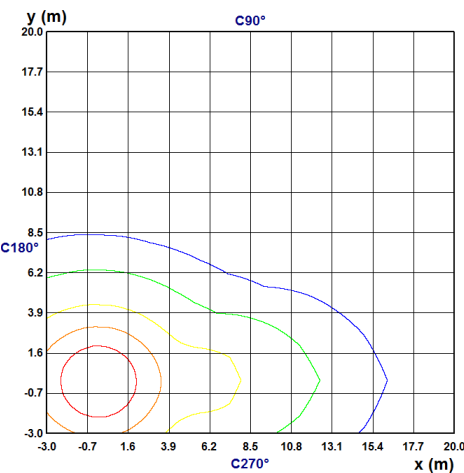


SPECIFICATIONS:

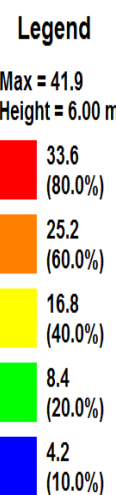
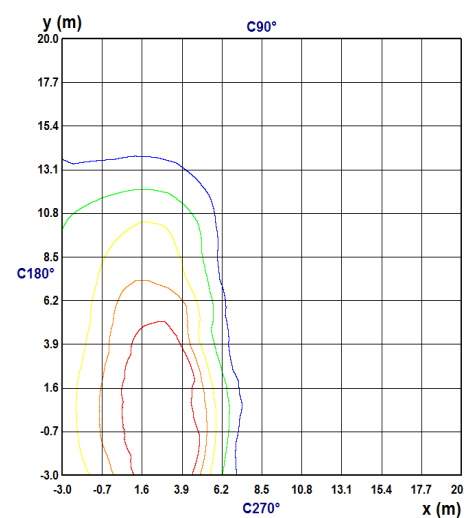
◆ PRODUCT CODE:	SUNFIRE 5 (50W) SF5 SUNFIRE 7 (70W) SF7 SUNBURST PRO 6 (60W) SBPRO 6 (using SB casting) SUNBURST PRO 8 (80W) SBPRO 8 (using SB casting) Available in AC Power (A) or DC Power (D) options
◆ SUPPLY VOLTAGE	20 – 28VDC, 90 – 264VAC & 127 – 396VDC PFC—0.90 @ 240VAC—0.98 @ 115VAC
◆ POWER RATING	Programmable and variable range between 5—50 Watts 7 – 70 Watts 6—60 Watts (SUNBURST PRO) 8—80 Watts (SUNBURST PRO) Circuit Power - 55watts & 88 watts
◆ LUMEN LEVEL	Average actual measured lumens 3,500 — 6,240 SF5— 3,500 Lm SF7— 4,900 Lm SB PRO 6 - 4,200 Lm SB PRO 8 - 6,240 Lm
◆ OPERATING TEMPERATURE	- 40°C to + 60°C Ambient (with cold start protection using ramp set)
◆ CIRCUITRY OPERATING TEMPERATURE	LEDs – 150°C Maximum Tj (Junction Temperature) Controller board circuitry – 105°C Maximum Typical operating conditions at full power, Tj = 80°C
◆ HUMIDITY	0 – 99%
◆ INGRESS CLASSIFICATION	IP66
◆ BODY MATERIAL	High Grade Cast Aluminium, Powder Coated
◆ LENS MATERIAL	Polycarbonate graded at ISO 178
◆ LENS LIGHT TRANSMISSION	Luminous Transmittance 88% +
◆ LIGHT COOLING	Convection & Software Temperature Controlled
◆ COLOUR APPEARANCE & RENDERING	Neutral White (4,000— 4,500K) Cool Daylight (5,300—6,350K) STANDARD
◆ LUMINAIRE LIFETIME	Measured 57,000 hours when operated at a Tj of below 80°C to L70 standard
◆ PHOTOCELL & MOVEMENT SENSOR	PV sensor inbuilt providing a variable light output depending on ambient light level. Programmable settings can be used in conjunction with PIR sensor
◆ COMPLIANCE	CE, RoHS, BS EN 60598-2-3:2003, BS EN 60598-1:2004 TUV (UL - SB casting only), EMC, FCC
◆ FINISH	Powder coated finish in grey RAL 7047 or black upon request
◆ DIMENSIONS-WEIGHT	34cm (L) X 34cm(W) X 19cm (H)- Weight: 6.6kg
◆ MOUNTING	Pole Mounted 62mm & 76mm Horizontal or Vertical, Hanging
◆ PRODUCTION	Made in United Kingdom
◆ OPTIC CHOICES	Area, Wide, Medium, Spot, Square, Asymmetric or any combination.

OPTICAL PATTERN:

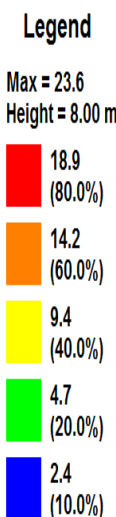
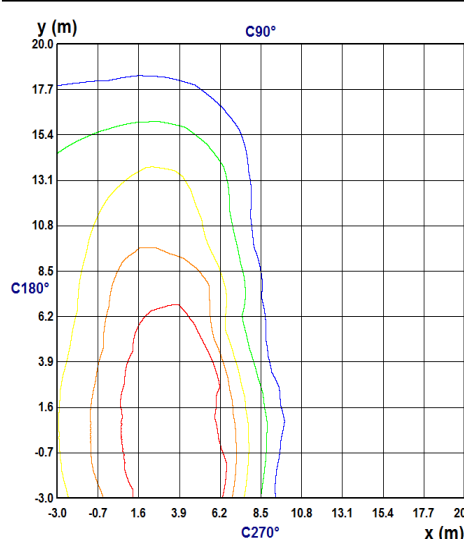
6 Metres OVAL (SunFIRE)



6 Metres ASYMMETRIC Optics



8 Metres ASYMMETRIC Optics (SBPRO)



LOW ENERGY DESIGNS LTD
UNIT 11/13 BRIDGE STREET
STURMINSTER MARSHALL
DORSET BH21 4DB
UNITED KINGDOM

PLEASE CONTACT US AND LET US HELP YOU TO CUT COSTS AND REDUCE YOUR CARBON FOOTPRINT.
TEL : +44 (0) 1258 858171 FAX : +44 (0)1 258 858170
EMAIL: sales@lowenergydesigns.com
Website: www.lowenergydesigns.com