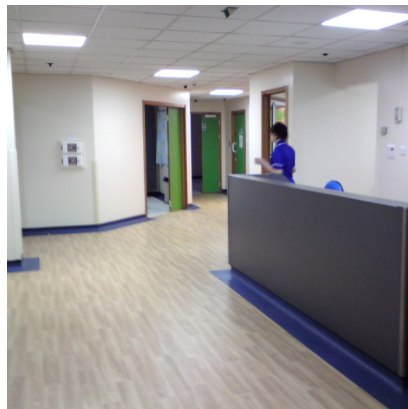




# SKY PANEL 66 LED

OFFICES | RETAIL | SCHOOLS | HEALTH CARE | HOSPITALITY



The Sky Panel 66 is a slim line panel which can provide outstanding energy savings against traditional fluorescent fittings. Using edge lighting LED technology the Sky Panel provides 150° light distribution.

Maximise your savings further by integrating our intelligent wireless controls via a separate PIR/Occupancy switch. The ceiling mounted PIR can deliver, Daylight Harvesting, Presence Detection, Maintained Light Levels, time-Delay functions and more.

---

## Features & Functions

- **Non-dimmable or Fully Dimmable 0-100%**
- **Edge Lighting LED Technology**
- **Aluminium 4 stage powder, fire retardant**
- **Opaque Diffuser 150° light distribution**
- **Optional PIR/Occupancy Sensor**
- **High Lumen Active LED Output**
- **50,000hr lifetime LM-80 B10**
- **Maintenance Free**
- **Environmentally Friendly**
- **Simple installation with plug in power supplies**

---

<b>Product</b>	<b>Sky Panel 66</b>
<b>Product Code</b>	SKYP-CW-D010
<b>Supply Voltage</b>	100—240 VAC. PFC = 0.9*
<b>Power Rating (Circuit)</b>	38 Watts
<b>Lumens</b>	4540
<b>LED Lifetime</b>	>50,000 hours LM-80 B10
<b>Ingress</b>	IP44
<b>Body Material</b>	White aluminium frame powder coated, Aluminium back
<b>Operating Temperature</b>	-20°C to +50°C Ambient
<b>Light Cooling</b>	Convection
<b>Colour Rendering</b>	Day White 5300k (+/- 5%)
<b>Compliance</b>	CE, RoHS 2011/65/EU, EMC 2014/30/EU, LVD 2014/35/EU
<b>Dimensions LxWxH</b>	595 x 595 x 12
<b>Weight</b>	3.5kg
<b>Mounting</b>	Ceiling Recessed, Surface mounted or Pendant
<b>*Plug in Power Supplies. Emergency versions available—3 hour maintained, integrated into LED luminaire. Dims to 10% of original output.</b>	